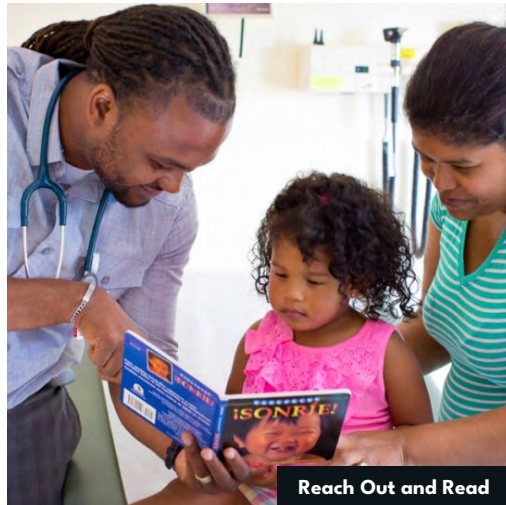


TURRELL FUND

A Foundation Serving Children

ANNUAL REPORT 2022



Contents

About the Turrell Fund	3
Thoughts from the Turrell Team	4
Grant Distribution Summary	8
Turrell Fund Grants	9
Financial Review	14
Grant Application Guidelines	16
S. Whitney Landon Awards	17
Officers and Board of Trustees	18
Turrell Fund Staff & Consultants	19



Oasis NJ



HealthySteps, ZERO TO THREE



Wharton Arts

ABOUT THE TURRELL FUND

Vision and Mission

SOCIETAL VISION

That need will be eliminated as a barrier to the access of quality educational and developmental experiences by all children, and especially the youngest and their families, so that they may be prepared for academic and life success.

ORGANIZATIONAL VISION

That access to quality educational and developmental opportunities will be assured for the children of the Turrell Fund's served areas, with an emphasis on the youngest, at-risk children and their families.

ORGANIZATIONAL MISSION

To financially and strategically support organizations which directly provide or foster the creation and delivery of quality developmental and educational services to at-risk children, especially the youngest and their families, in Vermont and designated areas of New Jersey.

History

The Turrell Fund was founded in 1935 by Herbert and Margaret Turrell. Herbert Turrell, a man burdened with an underprivileged childhood, a broken home and near-poverty translated his misfortune into devoted sympathy with and service to all young people facing challenges. The Turrells felt that the most important use for their wealth would be to give at-risk children the basic elements for success in life.

Turrell Today

Our priority is organizations serving young children ages zero to five which can present strong evidence of exceptional service quality and who have distinguished themselves along multiple dimensions. While we continue to fund direct services, times have changed, and many parents are in the workforce. We fund policy change because we recognize the importance of the early years and access to high-quality childcare.

Turrell Fund grants are awarded primarily to organizations located in Essex, Hudson, Passaic and Union Counties in New Jersey, and throughout Vermont. In our grant decisions, the at-risk profile of the children served, and the ultimate reach and impact of our potential investments, are primary criteria.

Gifts and Bequests

The Turrell Fund accepts gifts and bequests in furtherance of the work described in our Vision and Mission Statements. We reserve the right to decline any gift which carries with it requirements that are not fully consistent with our stated purposes.

Interested parties are encouraged to contact Turrell Fund at turrell@turrellfund.org.



Turrell Fund visits Kids in Business



Institute of Music

These past few years have been challenging ones for families in New Jersey and Vermont.

A devastating pandemic, widespread financial instability, and failing systems of care have put immense pressure on children, families, and communities.

Racial disparities and systemic inequities have been exacerbated by these challenges, and those most harmed by our system's failures tend to be Black, Latinx, from immigrant households, or other marginalized groups.

The crushing weight of poverty can manifest in many ways, but for many families it comes in the form of lack of child care, housing insecurity, economic insecurity, lack of access to nutritious food, and other barriers to long term family success.

Year after year, we are humbled by the remarkable work of our client agencies and partners. For every challenge facing our youngest residents and their loved ones, there are numerous community leaders, nonprofits, and coalitions working to help families thrive.

Through our flexible, community-based grantmaking and strategic advocacy efforts, we continue to put ourselves at the service of our client agencies and the families they serve.

Below you will find a narrative overview of our efforts in 2022 and 2023 as of the time of this publication.

Safe Babies Court Team

Safe Babies Court Team NJ (SBCT NJ) continues to achieve great impact for children and families under the strong leadership of Passaic County Court Appointed Special Advocates (Passaic County CASA) and with direct partnership from the Turrell Fund.

The Safe Babies model – developed by the ZERO TO THREE national early childhood policy organization – is an innovative and nationally recognized approach that applies the science of early childhood development to drive systemic change in child welfare systems across the country.

Safe Babies achieves impact by changing the practices of judges, child welfare workers, service providers, and community professionals to be non-adversarial and trauma-informed.

Staffed by a full-time Community Coordinator, Safe Babies sites meet frequently to support families, train staff on early childhood development, and support families. Outcomes include improved safety for infants and toddlers, faster time to permanency, preserved family relationships, and improved placement stability.

As of now, SBCT NJ has ushered over \$4 million dollars from the federal government into New Jersey to launch and solidify this nation-leading child welfare approach.

So far in 2023, SBCT NJ has served 43 children, including 17 families who have already successfully reached permanency, 82% of whom were reunified.

The three Community Coordinators also have access to an “Essentials Fund” (launched with support from the Turrell Fund) which covers one-time expenses for families and that helps expedite a child reaching permanency.

Other parts of New Jersey have expressed interest in this groundbreaking model, and the project has formed strong relationships with major stakeholders such as the Department of Children and Families, the Administrative Office of the Courts, and the Office of Parental Representation.

The Turrell Fund is committed to this transformative work and will continue to apply its mix of flexible grant support and trusting partnership to aid in the success and proliferation of this model.

HealthySteps

The HealthySteps initiative – launched in 2020 at Hackensack Meridian Health System by the Turrell Fund, the Burke Foundation, and The Nicholson Foundation – continues to spread rapidly across New Jersey.

Designed by ZERO TO THREE, this evidence-based, interdisciplinary model of pediatric care embeds a HealthySteps early childhood specialist in hospitals and clinics to promote the health and wellbeing of young children and their families.

The program provides an early childhood development support specialist to families where they are most likely to access it: the pediatric primary care office.

The current scaling plan of HealthySteps is supported by \$4 million in federal funding from the Human Resources Services Administration (HRSA).

These dollars were secured by the New Jersey American Academy of Pediatrics (NJAAP), which has become a major champion of HealthySteps along with ZERO TO THREE and a broad coalition of nonprofit, healthcare, and community partners.

Currently, there are four sites across New Jersey which reach approximately 2,000 children annually.

NJAAP is currently launching 8 new program sites: 4 at Cooper Pediatrics in Camden; 1 at Newark Beth Israel in Newark; and 3 at Newark Community Health Centers.

This expansion to 12 sites will expand the reach of HealthySteps to over 15,000 children annually.

Even more recently, HealthySteps achieved another extraordinary milestone: HealthySteps is now a funded line item in the FY2024 state budget in the amount of \$500,000.

This line item also includes an opportunity for a federal match – which would bring the final amount up to \$1 million in total.

These funds will be used to offer increased payment to HealthySteps program sites across the state.

We believe this initiative will transform the promise of pediatric care in New Jersey and help meet the needs of children, families, and communities.

Reimagine Child Care

The Reimagine Child Care (RCC) campaign continues to raise public awareness about the lack of high-quality, affordable child care in New Jersey and spur our partners to action.

The Turrell Fund supported Advocates for Children of NJ (ACNJ) as it laid the foundation for the successful passing of the Thrive by Three bill and program.

In July of 2022, Governor Phil Murphy signed this \$28 million grant program into law in order to expand the availability and improve the quality of infant and toddler child care in New Jersey.

The Thrive by Three program will support the development and creation of infant (under 18 months old) and toddler (18 months to 2 ½ years old) child care slots and provides technical assistance and hands on support for providers.

Our team has been in touch with Natasha Johnson, the Assistant Commissioner of the Division of Family Development (DFD), who is responsible for implementation and oversight of Thrive by Three.

From this conversation, we have been given confidence that the Thrive by Three dollars will be used to great and strategic effect.

These successes are only made possible through ACNJ's strategic advocacy work, widespread parent support, strong relationships with New Jersey Senate Majority Leader M. Teresa Ruiz and other legislators, and consistent collaboration with the Governor's office.

We are proud to support ACNJ as they ride the momentum of Thrive by Three and increase statewide interest in high-quality affordable child care.

Advocacy in Vermont

LET'S GROW KIDS

This year, **Let's Grow Kids** and its many partners have transformed the early care and education system in Vermont.

In May 2023, the Vermont Legislature passed the 2023 Child Care Bill (now also known as Act 76) with overwhelming support across the political spectrum.

Although a Governor's veto was issued, the Vermont Legislature held a bipartisan vote to override the veto and bring about this remarkable win for children and families.

On an annual basis, the bill will invest \$125 million into Vermont's child care system. It will be funded by a 0.44% payroll tax.

Around 7,450 more children and their families will have access to child care financial assistance.

Countless agencies and initiatives across the country are now looking to Vermont to understand how they achieved such a high degree of success.

This bill makes Vermont's child care system one of the most comprehensive and well-supported in the nation. The bill will stabilize Vermont's child care sector and provide increased access to affordable, quality child care for Vermont families who need it.

VERMONT EARLY CHILDHOOD ADVOCACY ALLIANCE

The **Vermont Early Childhood Advocacy Alliance** (the Alliance) continues to convene early childhood stakeholders and advocates to make shared, systems wide impact.

On March 15, 2023, the Alliance ran its signature event Early Childhood Day at the Legislature.

This milestone event in Vermont gives advocates and families an opportunity to directly engage their legislators regarding the challenges they face and possible solutions.

The event was a great success, and legislators left the event with a deeper understanding of early childhood development, systemic inequities, and social problems in Vermont.

The Alliance brings out the best in its base of committed stakeholders and trains organizations and individuals to advocate for themselves in Vermont's political process.

BUILDING BRIGHT FUTURES

In addition, **Building Bright Futures** (BBF) continues to leverage its status as Vermont's early childhood public private partnership to create systemic changes at the state level.

BBF advises the Governor's Office and the Legislature on policy and systems improvements that affect young children and their families. They also convene individuals, organizations, and advocates to meet the complex and diverse needs of Vermont's children.

BBF recently achieved a massive win for Vermont's early childhood system. In January 2023, BBF helped Vermont state government secure a \$23 million federal grant to strengthen the state's early childhood system.

This Preschool Development Grant (PDG) Renewal Grant will support the early childhood workforce and improve the quality and availability of services for children from birth to age 8.

The PDG grant includes \$2 million in subgrants to local communities annually to support mental health care for children and families, high-quality child care and family engagement, and support for the early childhood workforce.

The Alliance, LGK, and BBF are actively working together to build a better, stronger system for Vermont children and families.

Conclusion

The Turrell Fund remains committed to the well-being of children and families across New Jersey and Vermont.

We are consistently centered and inspired in our work due to the remarkable achievements and passion of the nonprofits we support, partner with, and believe in.

We seek out new and proven approaches for addressing the social problems that create systemic barriers for children and families.

The Turrell Fund and its partners will continue to work for long term systems change while supporting the day-to-day, concrete impact that only direct service agencies and nonprofits can have.

We partner with the nonprofit sector, philanthropy, State governments, and the private sector as we strive to build a better, more equitable future for all children and their loved ones.

Our doors are always open to those who seek to serve children and improve the lives of families.

- The Staff of the Turrell Fund



Mustard Seed School



Van Vleck House, Turrell Fund Office

GRANT DISTRIBUTION SUMMARY

BY PROGRAM AREA

2022		
Educational and Developmental Services for Children	\$	2,986,387
Advocacy and Policy Initiatives	\$	881,500
Mutual Membership Societies	\$	10,500
Total		\$ 3,878,387

BY GEOGRAPHY

2022		
New Jersey	\$	2,915,750
Average Grant	\$	17,565
Median Grant	\$	10,000
Number of Organizations Awarded		166
Vermont	\$	840,637
Average Grant	\$	12,362
Median Grant	\$	2,500
Number of Organizations Awarded		68
Other	\$	122,000
Average Grant	\$	6,421
Median Grant	\$	5,000
Number of Organizations Awarded		19
Total		\$ 3,878,387

TOTAL OF GRANTS AWARDED SINCE INCEPTION

1935 through 2022 (88 years)	\$	260,668,661
------------------------------	----	-------------

TURRELL FUND GRANTS

FOR THE YEAR ENDED DECEMBER 31, 2022

Organization	Grant Purpose	City	State	Amount
Advocates for Children of New Jersey	Program Support / Operating Support / Turrell Champion Award	Newark	NJ	\$ 311,000
American Composers Orchestra	Program Support / 2022 Innovation Grant	New York	NY	\$ 25,000
Apostles' House	Program Support	Newark	NJ	\$ 2,500
Arts Bus, Inc.	Program Support / Operating Support	Randolph	VT	\$ 10,400
Assembly for the Arts	Program Support	Cleveland	OH	\$ 1,000
Barton Library Club	Program Support	Barton	VT	\$ 1,000
Beaver Brook Childrens School Inc	Program Support	Wilmington	VT	\$ 1,000
Big Brothers Big Sisters Of Essex, Hudson & Union Counties	Program Support	Newark	NJ	\$ 10,000
Brattleboro Museum And Art Center Inc	Program Support	Brattleboro	VT	\$ 2,000
Building Bright Futures State Advisory Council, Inc.	Program Support / Operating Support	Williston	VT	\$ 15,000
Burlington City Arts Foundation, Inc.	Operating Support	Burlington	VT	\$ 1,500
Burlington School District Integrated Arts Academy	Operating Support	Burlington	VT	\$ 1,500
Butterfly Dreamz Inc	Operating Support	Newark	NJ	\$ 2,500
Camp Nejedra Foundation, Inc.	Operating Support	Stillwater	NJ	\$ 300
Candid	Program Support	New York	NY	\$ 8,000
Carnegie Hall	Operating Support	New York	NY	\$ 10,000
CASA for Children of Essex County (Essex County Court Appointed Special Advocate)	Program Support	Newark	NJ	\$ 30,000
Caucus Educational Corporation, Inc.	Program Support	Montclair	NJ	\$ 150,000
Center For Education And Juvenile Justice	Program Support / Operating Support	Newark	NJ	\$ 56,000
Chandler Center for the Arts Inc	Operating Support	Randolph	VT	\$ 2,000
Child Care Aware of America	Program Support	Arlington	VA	\$ 2,500
Children's Aid and Family Services, Inc.	Program Support / Operating Support	Paramus	NJ	\$ 31,000
Children's Day Nursery and Family Center	Program Support / Operating Support	Passaic	NJ	\$ 44,500
Cleveland Clinic	Program Support	Independence	OH	\$ 10,000
Community FoodBank of New Jersey, Inc.	Program Support	Hillside	NJ	\$ 500
Community Foundation of New Jersey (Branch Brook Park Alliance Donor Advised Fund)	Program Support	Morristown	NJ	\$ 5,000
Community Foundation of New Jersey (Summer Fun)	Program Support / Operating Support	Morristown	NJ	\$ 15,500
Council Of New Jersey Grantmakers, Inc.	Program Support	Ewing	NJ	\$ 25,000
Court Appointed Special Advocate, CASA of Hudson County	Program Support	Jersey City	NJ	\$ 20,000
Court Appointed Special Advocates - Passaic County	Program Support / Operating Support / Innovation Grant	Wayne	NJ	\$ 171,000
CUMACECHO, Inc.	Program Support / Operating Support	Paterson	NJ	\$ 54,250
Dailey Memorial Library	Program Support	Derby	VT	\$ 1,000
Donald M Payne Sr Global Foundation Inc	Operating Support	Newark	NJ	\$ 300

TURRELL FUND GRANTS (CONT...)

Organization	Grant Purpose	City	State	Amount
Eagle Flight Squadron, Inc.	Program Support	East Orange	NJ	\$ 20,000
Early Care And Learning Partnership Inc	Operating Support	Vergennes	VT	\$ 2,500
Early Partners	Operating Support	New Orleans	LA	\$ 1,250
East Side High School	Program Support / Turrell Champion Award	Newark	NJ	\$ 12,000
Educational Arts Team	Program Support / Operating Support	Jersey City	NJ	\$ 7,500
Elizabeth Coalition to House The Homeless, The	Program Support	Elizabeth	NJ	\$ 15,000
Eva's Village, Inc.	Program Support / Operating Support	Paterson	NJ	\$ 23,000
Exponent Philanthropy	Operating Support	Washington	DC	\$ 2,500
Family Garden, The	Operating Support	Brattleboro	VT	\$ 2,000
Family Promise of Cape May County	Operating Support	Cape May	NJ	\$ 5,000
Family Promise of Essex County, Inc.	Program Support / Operating Support	Montclair	NJ	\$ 7,000
Firehouse Center for the Arts	Program Support / Operating Support	Newburyport	MA	\$ 2,500
Flynn Center for the Performing Arts Ltd.	Program Support / Operating Support	Burlington	VT	\$ 2,000
FOCUS, Inc Newark Debate Academy	Operating Support	Newark	NJ	\$ 43,000
Food Research and Action Center (FRAC)	Operating Support	Washington	DC	\$ 1,000
Forest Hill Community Association	Program Support	Newark	NJ	\$ 1,000
Generations United	Operating Support	Washington	DC	\$ 14,500
GlassRoots, Inc.	Program Support	Newark	NJ	\$ 7,500
Glover Public Library	Program Support	Glover	VT	\$ 1,000
Good Beginnings of Central Vermont	Operating Support	Montpelier	VT	\$ 3,000
Grammar School, The	Program Support	Putney	VT	\$ 1,000
Gray Charter School, The	Program Support	Newark	NJ	\$ 10,000
Greater Newark Conservancy, Inc.	Program Support	Newark	NJ	\$ 15,000
Greensboro Free Library	Program Support	Greensboro	VT	\$ 3,000
Hackensack University Medical Foundation	Interim Grant	Lodi	NJ	\$ 125,825
Harlem Chamber Players, Inc., The	Program Support	New York	NY	\$ 3,500
Henry Street Settlement	Program Support	New York	NY	\$ 2,500
Hunger Mountain Children's Center	Operating Support	Waterbury	VT	\$ 1,000
Immaculate Conception High School	Program Support	Montclair	NJ	\$ 10,000
Inclusive Arts Vermont (formerly VSA Vermont)	Program Support	St. Albans	VT	\$ 3,000
Innerfaith Performing Arts Center, Inc. (IPAC)	Program Support	Paterson	NJ	\$ 10,000
Institute Of Music For Children, Inc.	Operating Support	Elizabeth	NJ	\$ 10,000
Ironbound Community Corporation	Program Support	Newark	NJ	\$ 50,000
Island Pond Public Library	Program Support / Operating Support	Island Pond	VT	\$ 4,000
Jazz House Kids, Inc	Program Support / Operating Support	Montclair	NJ	\$ 10,500
JerseyCAN	Program Support	Washington	DC	\$ 20,000
Keeping Babies Safe, Inc.	Program Support	Warren	NJ	\$ 2,500
Kent Place School	Program Support	Summit	NJ	\$ 22,500
Kids In Business, Inc.	Program Support	Bloomfield	NJ	\$ 10,000
La Casa de Don Pedro	Program Support / Operating Support	Newark	NJ	\$ 22,000

TURRELL FUND GRANTS (CONT...)

Organization	Grant Purpose	City	State	Amount
Lake Champlain Waldorf School	Operating Support	Shelburne	VT	\$ 2,000
Let's Grow Kids	Program Support / Operating Support	Burlington	VT	\$ 451,000
Lund Family Center, Inc.	Program Support	South Burlington	VT	\$ 6,000
Magic Mountain Childrens Center Inc	Operating Support	South Royalton	VT	\$ 5,000
Main Street Counseling Service	Program Support / Operating Support	West Orange	NJ	\$ 43,000
Marlboro School of Music, Inc.	Operating Support	Philadelphia	PA	\$ 5,000
Mental Health Association in Passaic County	Program Support / Operating Support	Clifton	NJ	\$ 10,000
Montclair Art Museum	Program Support	Montclair	NJ	\$ 6,000
Montclair Foundation, The / Van Vleck House & Gardens	Program Support / Operating Support	Montclair	NJ	\$ 12,500
Montclair Gateway To Aging in Place	Operating Support	Montclair	NJ	\$ 3,000
Montclair State University Foundation	Program Support	Montclair	NJ	\$ 1,000
Morrill Memorial and Harris Library	Program Support	Strafford	VT	\$ 3,000
Music For All Seasons, Inc	Operating Support	Scotch Plains	NJ	\$ 10,000
Music Will (Formerly Little Kids Rock)	Program Support / Operating Support	Montclair	NJ	\$ 10,500
Mustard Seed School; Christian Urban Education, Inc.	Program Support	Hoboken	NJ	\$ 20,000
Neck of the Woods Child Care Center	Operating Support	Waitsfield	VT	\$ 4,000
New Jersey Association for the Education of Young Children	Program Support / Innovation Grant	Barneget Light	NJ	\$ 10,000
New Jersey Community Development Corporation	Program Support	Paterson	NJ	\$ 10,000
New Jersey Historical Society	Program Support / Operating Support	Newark	NJ	\$ 30,000
New Jersey Performing Arts Center	Program Support	Newark	NJ	\$ 50,000
New Jersey Symphony	Program Support / Operating Support	Newark	NJ	\$ 102,000
Newark Arts!	Program Support	Newark	NJ	\$ 4,500
Newark Boys Chorus School	Program Support	Newark	NJ	\$ 15,000
Newark School of the Arts	Program Support / Operating Support	Newark	NJ	\$ 66,500
Newark Trust for Education	Operating Support	Newark	NJ	\$ 5,000
Oasis – A Haven for Women & Children, Inc.	Program Support / Operating Support	Paterson	NJ	\$ 10,500
Ophelia J. Berry Fund, Inc., The (Pathways to College)	Program Support / Innovation Grant	Montclair	NJ	\$ 80,000
Orleans County Historical Society, Inc.	Program Support	Brownington	VT	\$ 1,000
Parents Engaging Parents	Program Support / Innovation Grant	Cranford	NJ	\$ 35,000
Partnership for Maternal and Child Health of Northern New Jersey	Program Support	Newark	NJ	\$ 82,000
Paterson Education Fund, Inc.	Program Support	Paterson	NJ	\$ 45,000
Plainfield City Union of the King's Daughters	Program Support	Plainfield	NJ	\$ 31,000
Prevent Child Abuse - Vermont	Program Support / Operating Support	Montpelier	VT	\$ 10,000
Princeton Area Community Foundation, Inc.	Program Support	Lawrenceville	NJ	\$ 10,000
Pushcart Players	Program Support / Operating Support	Verona	NJ	\$ 5,000
Putney Foodshelf Incorporated	Operating Support	Putney	VT	\$ 1,000
Rock Point School	Operating Support	Burlington	VT	\$ 2,000

TURRELL FUND GRANTS (CONT...)

Organization	Grant Purpose	City	State	Amount
Rutgers University Foundation, The	Program Support	New Brunswick	NJ	\$ 10,000
Rutland County Parent-Child Center	Operating Support	Rutland	VT	\$ 2,500
Sacred Heart School	Program Support	Jersey City	NJ	\$ 18,000
Saint Barnabas by-the-Bay Episcopal Church	Program Support	Villas	NJ	\$ 2,000
Saint Dominic Academy	Program Support	Jersey City	NJ	\$ 15,000
Saint Vincent Academy	Program Support / Operating Support	Newark	NJ	\$ 83,000
Schools That Can	Program Support	Newark	NJ	\$ 10,000
Sharron Miller's Academy for the Performing Arts, Inc.	Program Support	Montclair	NJ	\$ 20,000
Simple Interactions Inc	Operating Support	Arlington	MA	\$ 9,000
Sound Start Foundation	Program Support	Mountain Lakes	NJ	\$ 5,000
Southern Vermont Arts Center Incorporated	Program Support	Manchester	VT	\$ 5,000
Sphinx Organization	Program Support	Detroit	MI	\$ 20,000
St Paul Baptist Church, Inc.	Operating Support	Montclair	NJ	\$ 400
St. Benedict's Preparatory School	Program Support	Newark	NJ	\$ 75,000
St. Joseph R C Church (Resurrection School)	Program Support	Jersey City	NJ	\$ 25,000
St. Jude Children's Research Hospital	Operating Support	Memphis	TN	\$ 1,000
St. Paul's Community Development Corporation	Program Support / Operating Support	Paterson	NJ	\$ 10,500
Student / Partner Alliance	Program Support / Operating Support	Summit	NJ	\$ 25,500
Studio in a School	Program Support	New York	NY	\$ 45,000
Teach for America, Inc.	Program Support	Newark	NJ	\$ 30,000
The Center for Great Expectations	Program Support	Somerset	NJ	\$ 50,000
The Family Center of Washington County	Operating Support	Montpelier	VT	\$ 3,000
The Family School Association of The Ethical Community Charter	Program Support	Jersey City	NJ	\$ 10,000
The Foundation for City College, Inc.	Program Support	New York	NY	\$ 1,250
The Kids on the Block New Jersey	Program Support	Ship Bottom	NJ	\$ 2,500
The Neighborhood Schoolhouse of Brattleboro, Inc.	Operating Support	Brattleboro	VT	\$ 4,500
The Salvation Army	Program Support	Newark	NJ	\$ 20,000
The Shakespeare Theatre of New Jersey, Inc.	Program Support / Operating Support	Florham Park	NJ	\$ 10,500
Tri-County Scholarship Fund	Program Support	Mendham	NJ	\$ 30,000
Trinitas Health Foundation	Program Support	Elizabeth	NJ	\$ 4,000
Unified Vailsburg Services	Program Support	Newark	NJ	\$ 30,000
Union City Music Project	Program Support / Operating Support	Weehawken	NJ	\$ 10,500
United Family and Children's Society	Program Support / Operating Support	Plainfield	NJ	\$ 22,000
United Way of Passaic County	Program Support / Operating Support	Paterson	NJ	\$ 5,000
Urban League of Essex County	Program Support	Newark	NJ	\$ 10,000
Vermont Association for the Education of Young Children	Program Support / Operating Support	Burlington	VT	\$ 35,300
Vermont Children's Trust Foundation	Program Support / Landon Award	Burlington	VT	\$ 33,637

TURRELL FUND GRANTS (CONT...)

Organization	Grant Purpose	City	State	Amount
Vermont Community Loan Fund (Vermont Early Childhood Alliance)	Program Support / Operating Support	Montpelier	VT	\$ 171,000
Vermont Family Network	Operating Support	Williston	VT	\$ 5,000
Vermont Institute of Natural Science, Inc.	Program Support	Quechee	VT	\$ 3,000
Vermont Youth Orchestra Association, Inc.	Operating Support	Colchester	VT	\$ 2,000
Vivian Beaumont Theater, Inc.	Program Support / Operating Support	New York	NY	\$ 27,500
Volunteer Lawyers For Justice, Inc.	Program Support	Newark	NJ	\$ 21,000
West Bee Nursery School Inc	Operating Support	Brattleboro	VT	\$ 2,500
Wharton Institute for the Performing Arts, Inc., The	Program Support	Berkeley Heights	NJ	\$ 10,000
Windsor County Partners	Program Support / Operating Support	Windsor	VT	\$ 3,300
Winston Prouty Center for Child and Family Development	Program Support / Operating Support	Brattleboro	VT	\$ 7,000
Write on Sports, Inc.	Program Support / Operating Support	South Orange	NJ	\$ 33,500
YMCA - Eastern Union County (Gateway Family YMCA)	Program Support	Elizabeth	NJ	\$ 20,000
York Street Project	Program Support	Jersey City	NJ	\$ 20,000
Young Tradition Vermont	Program Support / Operating Support	Fairfax	VT	\$ 20,000
Youth Consultation Service, Inc.	Program Support	Hackensack	NJ	\$ 20,000
YWCA - Eastern Union County	Program Support	Kenilworth	NJ	\$ 15,000
ZERO TO THREE	Interim Grant	Washington	DC	\$ 75,175
Total			\$	3,878,387

Turrell Fund

STATEMENTS OF ASSETS, LIABILITIES AND NET ASSETS (MODIFIED CASH BASIS)

		Year Ended December 31,	
		2022	2021
Assets			
Cash and cash equivalents	\$	171,628	168,663
Investments, at fair value		111,509,508	130,043,674
Deferred compensation investments		202,385	96,295
Other assets		4,500	4,500
	\$	111,888,021	130,313,132
Liabilities			
Deferred compensation obligation	\$	202,385	96,295
Net Assets			
Without donor restrictions	\$	111,685,636	130,216,837
	\$	111,888,021	130,313,132

A complete audited financial statement, with the report of PFK O'Connor Davies, Certified Public Accountants, is available at our office.

Turrell Fund

STATEMENTS OF REVENUE, EXPENSES AND CHANGE IN NET ASSETS (MODIFIED CASH BASIS)

	Year Ended December 31,	
	2022	2021
Support and Revenue		
Investment Return		
Dividends and interest	\$ 463,126	394,546
Realized gains on investments	1,000,897	5,382,397
Unrealized (losses) gains on investments	(12,768,926)	13,852,978
Other investment income	3,251	3,503
	(11,301,652)	19,633,424
Investment expenses	(561,188)	(640,491)
Federal excise tax expense	(150,000)	(111,000)
Total Investment Return	(12,012,840)	18,881,933
Contributions	186	5,000
Total Support and Revenue, net of Investment Revenue	(12,012,654)	18,886,933
Expenses		
Program Expenses		
Grant awards, net	3,878,387	3,970,742
Direct charitable activities	1,066,842	921,915
Total Program Expenses	4,945,229	4,892,657
Foundation operations and governance	1,573,318	1,466,094
Total Expenses	6,518,547	6,358,751
Change in Net Assets	(18,531,201)	12,528,182
Net Assets		
Beginning of Year	130,216,837	117,688,655
End of Year	\$ 111,685,636	130,216,837

A complete audited financial statement, with the report of PFK O'Connor Davies, Certified Public Accountants, is available at our office.

GRANT APPLICATION GUIDELINES

Turrell grants are awarded to organizations serving children – especially the youngest – and their families in Vermont and New Jersey (specifically Essex, Hudson, Passaic, and Union Counties.)

We give special consideration to programs and initiatives serving children birth to five, with a special focus on infants, toddlers, and their families.

We prioritize proposals serving areas where quality services and supports are limited, and the concentration of children and families facing systemic barriers is high. Successful applicants must show demonstrated results supported by rigorous measurement and analysis.

On a final note, Turrell Fund gives priority to organizations pursuing systemic change and addressing racial disparities through policy change and advocacy.

Grants are awarded to agencies that exhibit:

- Evidence of exceptional quality
- Distinction through the creation of new benchmarks or best practices
- A voice in the chorus of those speaking to educational policy change
- Initiatives directed at systems and policy change



Innerfaith Performing Arts

Eligibility

The Turrell Fund awards grants to 501(c)(3) tax-exempt organizations with projects and portfolios especially for the youngest in New Jersey and Vermont.

Once an organization has applied, one year must elapse before applying again, regardless of the result.

How to Apply

All applications for Turrell Fund grants are to be submitted online.

The Board of Trustees considers grant requests in the Spring and Fall.

	Spring Cycle	Fall Cycle
Applications Accepted	January 1 – February 1	July 1 – August 1
Notification	May	November

For detailed instructions, please visit our website at www.turrellfund.org/apply.

S. WHITNEY LANDON AWARDS

The S. Whitney Landon Awards are presented each year, in Vermont, for programs which have achieved break-through results in the delivery of services to the youngest at-risk children, and their families, using innovative and creative strategies.

These agencies generally have been active with the early childhood system in their community and advocate at the local, regional, state and/or national level for the well-being of our youngest children and their families.

2022 was the twenty-seventh year of the Awards!

There were seven awards totaling \$30,000 distributed by the Vermont Children's Trust Foundation.

In 2022, the Vermont Children's Trust Foundation managed the S. Whitney Landon Awards process.

For a full list of previous Landon Awards, please visit our website: <https://www.turrellfund.org/about/landon-awards/>

2022

- **Alexandria Whitcomb Childcare**
BARRE, VT
- **Early Education Resource Center**
WATERBURY, VT
- **Old School**
SOUTH BURLINGTON, VT
- **Orleans Central Early Childhood Program**
BARTON, VT
- **Rural ARTS Collaborative**
GREENSBORO, VT
- **The ARTS Bus**
RANDOLPH, VT
- **Winston Prouty Center for Child and Family Development**
BRATTLEBORO, VT

For a complete list of S. Whitney Landon Award recipients, please visit our website at www.turrellfund.org.



Rural ARTS Collaborative



The ARTS Bus, VT

OFFICERS AND BOARD OF TRUSTEES

Officers

S. Lawrence Prendergast

Chairman of the Board

Curtland E. Fields

Secretary

Madison McHugh-Thieke

Assistant Secretary

Richard Ribeiro

Treasurer

Board of Trustees

S. Lawrence Prendergast

MORRISTOWN, NEW JERSEY

President,
Prendergast Capital Management
Retired Vice President and Treasurer,
AT&T

Robert E. Angelica

MORRISTOWN, NEW JERSEY

Retired Chairman and CEO,
AT&T Investment Management Corp.

Elizabeth W. Christie

PUTNEY, VERMONT

Former Executive Director,
Windham Child Care Association

Curtland E. Fields

VERONA, NEW JERSEY

Retired President,
AT&T Consumer Services

The Reverend William S. Gannon

BEDFORD, NEW HAMPSHIRE

Retired Episcopal Priest

William H. Hammond, Jr.

SUMMIT, NEW JERSEY

Vice President, Investment Management,
AT&T Services, Inc.

Kim Keiser

FAYSTON, VERMONT

Lead Trustee,
Vermont
Vermont Executive,
Turrell Fund (Retired)

Dr. Junlei Li

CAMBRIDGE, MASSACHUSETTS

Endowed Senior Lecturer &
Chair of Human Development
and Education Program,
Harvard Graduate School of Education

Matthew E. Melmed

WASHINGTON, DC

Executive Director,
ZERO TO THREE

The Reverend Dr. John P. Mitchell

CAPE MAY, NEW JERSEY

Rector,
Episcopal Church of the Advent
Retired Partner,
Cahill Gordon & Reindel

John Morning

NEW YORK, NEW YORK

Trustee,
Henry Street Settlement
Member,
New York State Council of the Arts
Board of Directors,
Lincoln Center Theater
Advisory Director,
Carnegie Hall

Mark Sustic

FLETCHER, VERMONT

Founder/Executive Director/
Program Manager,
Young Tradition Vermont
Consultant,
Vermont Community Foundation

TURRELL FUND STAFF & CONSULTANTS

Staff

Curtland E. Fields

| President and CEO

Richard A. Ribeiro

| Chief Financial & Operations Officer

Evan Delgado

| President of Programs and Planning

Madison McHugh-Thieke

| Senior Director of
Operations and Programs

Andres Monclut

| Director of Grants Administration

Susanne Walsh

| Financial Process Support Manager

Stanley Carroll

| Implementation Coordinator

Anita Clark

| Office Assistant

Consultants

Jeremy Gallagher

| Project/IT Support

Kay Hendon

| Special Advisor, Early Childhood Policy

**TURRELL
FUND**

Turrell Fund
21 Van Vleck Street
Montclair, NJ 07042

973.783.9358
www.turrellfund.org
turrell@turrellfund.org